



TYPE 1002F SEMIAUTOMATIC BAG CLOSING MACHINE



P18-00163 PRINTER
(1002F Model C)

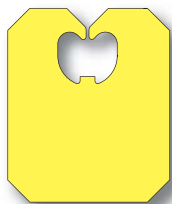


P18-00094 PRINTER
(1002F Model D)

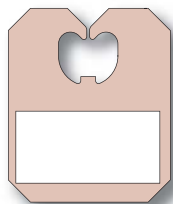


The Kwik Lok® 1002F uses the Series "R" and Series "S" Striplok® Bag Closures.

The Model C features a Trodat® printer which uses "grooved, press-on" rubber type. Press-on type permits customizing of imprint copy. The Model D features a Trodat® band printer for printing dates. Models C & D require the use of Series "RL" or "SL" closures. These closures are manufactured with a small paper label affixed to the closure.



Series R
(medium duty)
Series S
(heavy duty)



Series RL
(medium duty)
Series SL
(heavy duty)

The 1002F can be portable, or permanently mounted. Suction-cup feet allow the portable unit to be used on any flat, clean surface. Bolt holes are pre-drilled for permanent mounting (bolts are not included). A kit is also available for mounting the machine on an Oliver slicer (page 85).

SPECIFICATIONS

HEIGHT:.....14.5" (36.8 cm)
WIDTH:8" (20.3 cm)
LENGTH:23.5" (59.7 cm)

APPROXIMATE SHIPPING WEIGHT & DIMENSIONS
15.5" x 26" x 9.5"; 15 lb.; 2.2 cu. ft.
39 cm x 66 cm x 24 cm; 6.8 kg, 0.06 m³

ORDERING INFORMATION

Order by Type and Model number (i.e. Type 1002F Model AR)

OPTIONS

Z0002020 Kit - 1002 Mounting (for use on Model 797G Oliver Slicer)

SPECIFICATION CHART

TYPE	MODEL	CLOSURE	PRINTER	PLASTIC THICKNESS	SPEED (Bags/Min)
1002F	AR	Series R	N/A	Medium Duty	30
1002F	AS	Series S	N/A	Heavy Duty	30
1002F	CRL	Series R & RL**	Block	Medium Duty	30
1002F	CSL	Series S & SL**	Block	Heavy Duty	30
1002F	DRL	Series R & RL**	Band	Medium Duty	30
1002F	DSL	Series S & SL**	Band	Heavy Duty	30

**Series R and Series S can be used on the 1002F Model C and D but CANNOT BE PRINTED.